

About Walker

Part of the Community for 136+ Years

At Walker, we strive to build a sustainable future by working alongside the communities we operate in. With this core vision, Walker has successfully operated in Niagara for over 136 years. Walker is a fifth-generation, Niagara based family-owned company with over 1,200 employees across North America.



Our Innovative Campus



Walker's Niagara Falls location has transformed into an integrated Resource Management Campus and is an important part of the region's waste management infrastructure. We have safely managed Niagara's waste for over 40 years.

Committed to Resource Recovery

We are continuously innovating and investing in solutions to recover and repurpose landfill-bound waste into sustainable materials and products to reduce society's environmental impact.



Learn more about Walker's Resource Management Campus:

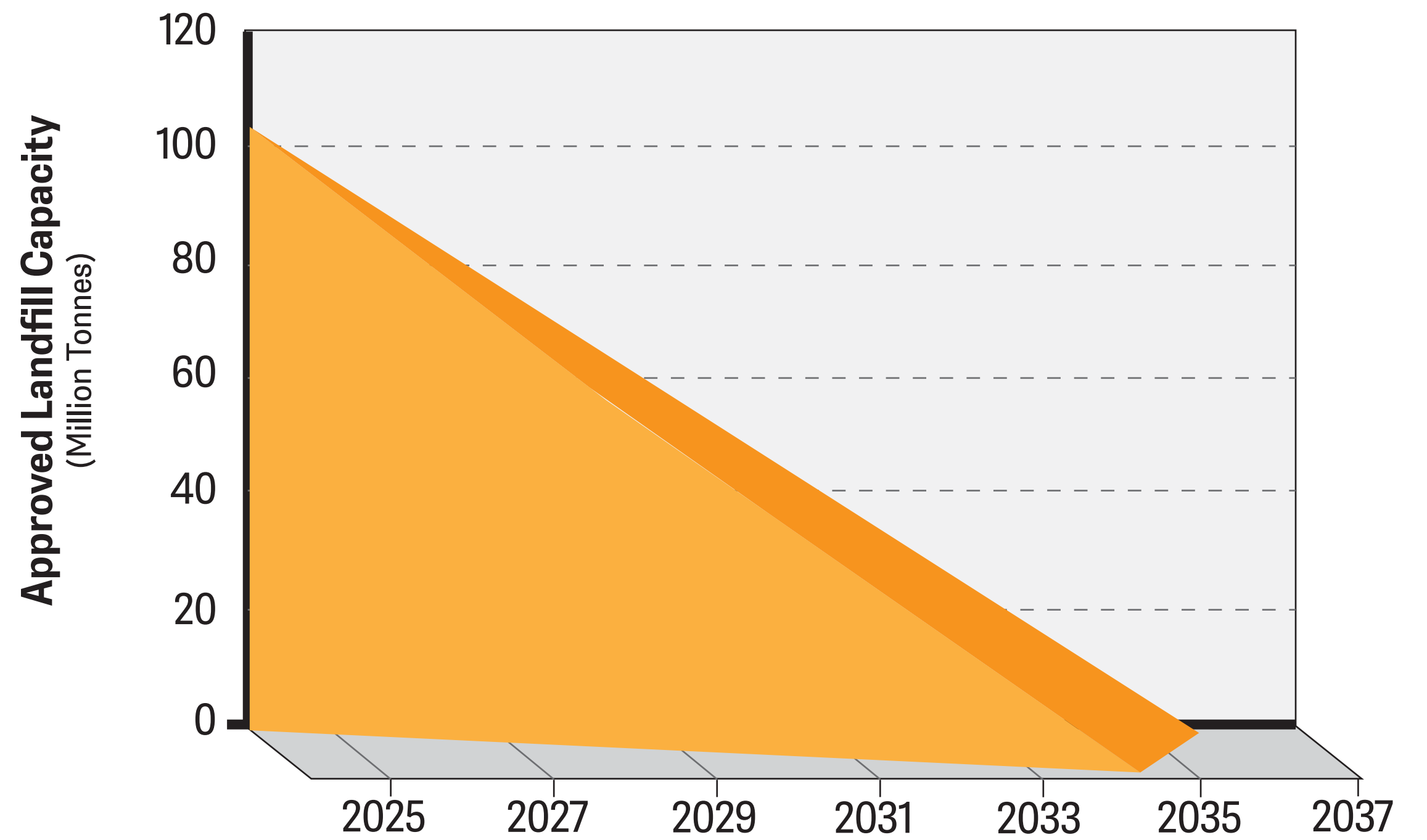


Niagara's Waste Disposal Solution

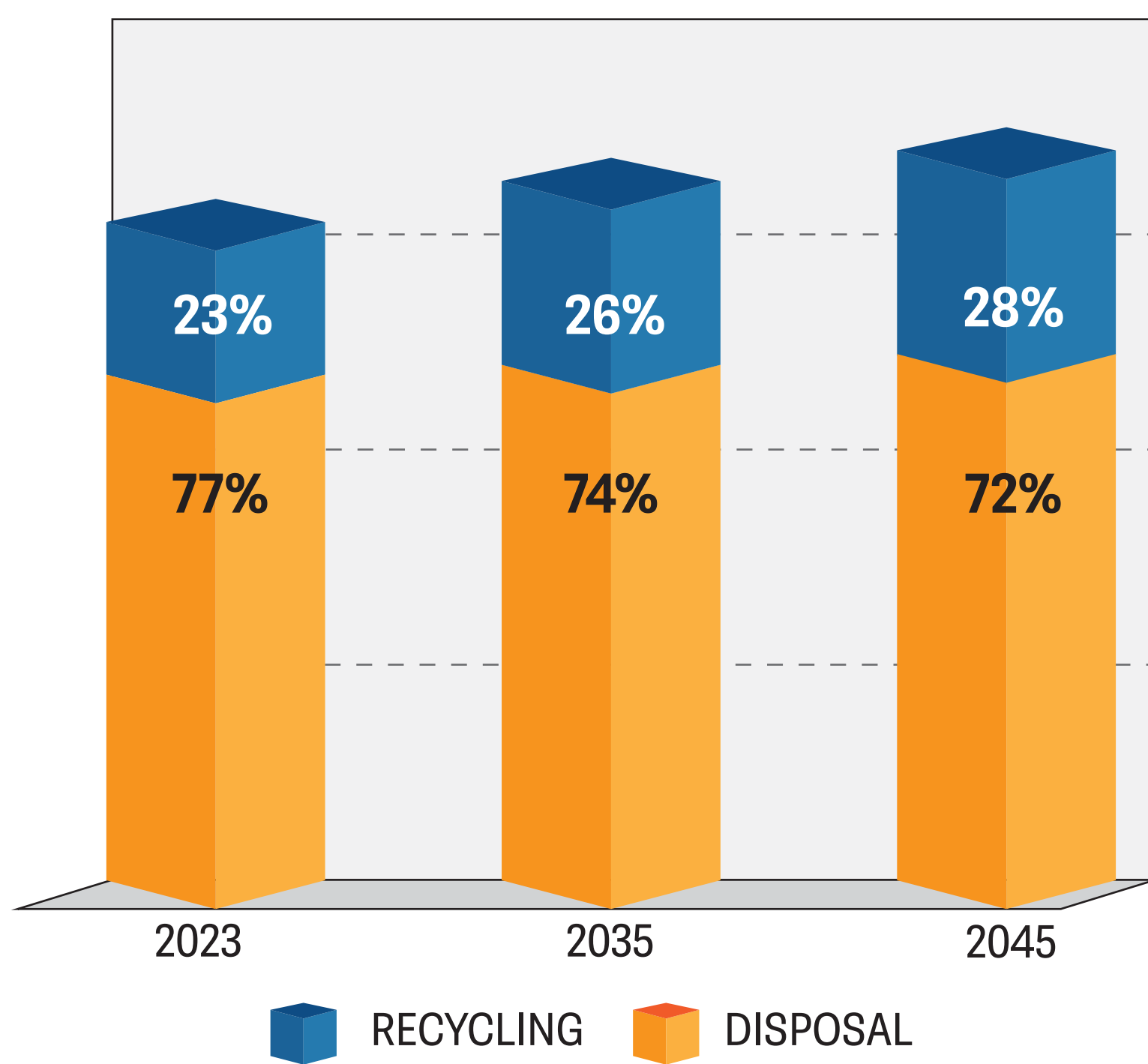
Ontario is expected to run out of landfill capacity by 2035

- Existing landfills are quickly filling up
- Population & waste generation are increasing
- It takes up to 10 years to develop new landfill capacity

ONTARIO'S REMAINING LANDFILL CAPACITY



ONTARIO'S RECYCLING & DISPOSAL RATES

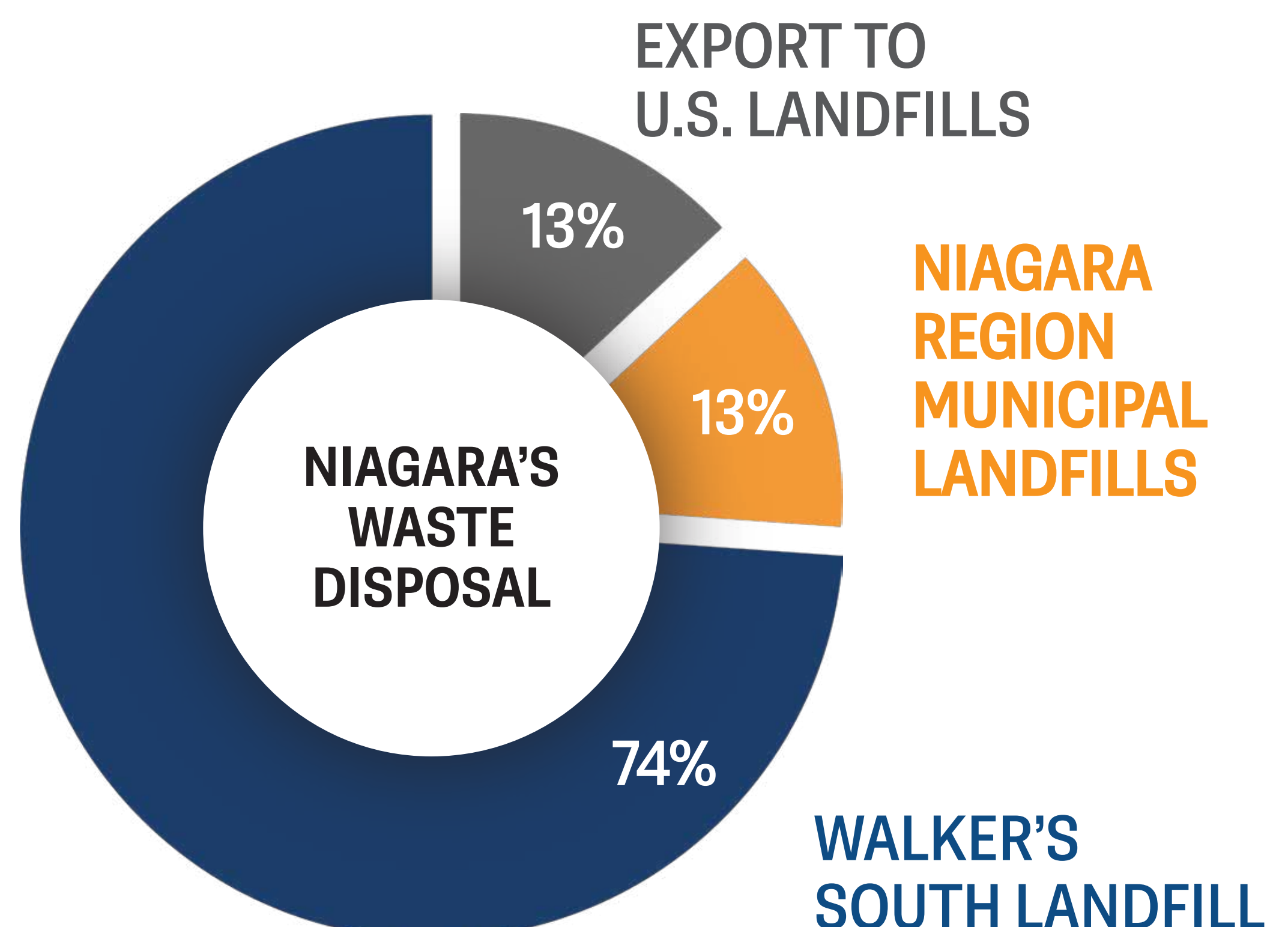


Despite recycling efforts, there will still be materials requiring safe disposal

- Even with increased recycling and Green Bin composting, landfills are still needed to safely manage residual waste

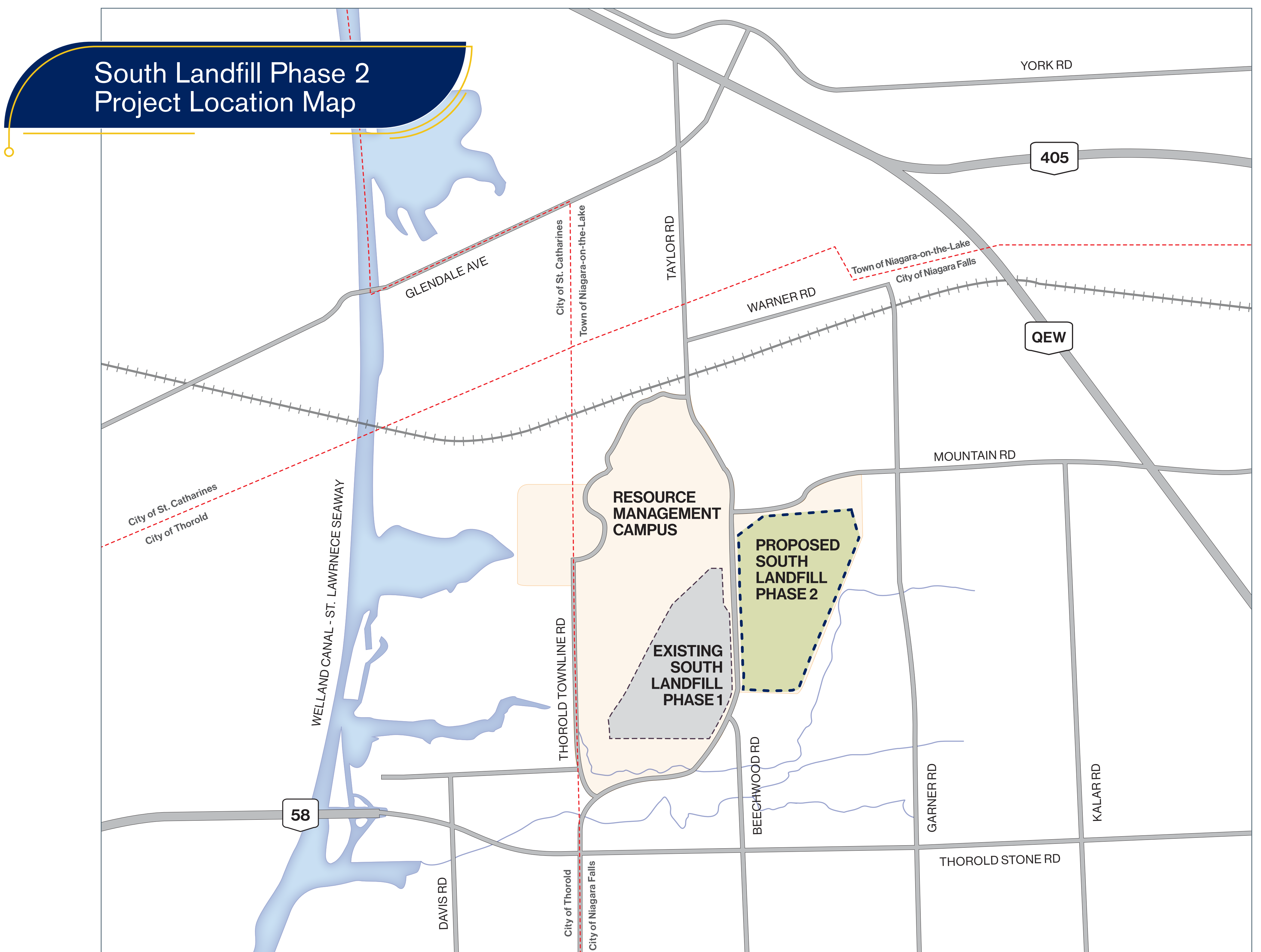
Niagara is no exception, additional disposal capacity is needed

- Over 2/3 of Niagara's waste is currently managed at the South Landfill, which is expected to reach capacity by 2030



Safe & Reliable Waste Management

- The existing phase of Walker's South Landfill on Taylor Road in Niagara Falls is soon approaching **capacity**, with approximately **8 years remaining**.
- As the Niagara region continues to grow, planning for long-term waste disposal capacity is increasingly important. Despite recycling and green bin composting efforts, **Niagara requires landfill space** to safely manage non-recyclable materials.
- Using existing waste management infrastructure, Walker is proposing to **continue to operate the South Landfill** by developing **Phase 2** on the eastern portion of our Resource Management Campus, as shown below.



The Future Development of the South Landfill

Walker is proposing the future development of its South Landfill, **a state-of-the-art engineered landfill**, designed with exceptional safety and environmental controls.



Image showing the construction of several layers of the engineered landfill liner

Key Facility Information



1.1 million tonnes of solid, non-hazardous waste per year



18 million m³ total capacity



20 years of safe disposal



~500 jobs supported in Niagara

Did you know?

Walker harnesses the **renewable energy** generated from its Niagara landfill

Walker harnesses enough renewable energy from its landfill to power ~25,000 homes annually.

Phase 2 is estimated to produce an additional 10,000 homes worth of green energy.



An Environmental Planning Process

The South Landfill Phase 2 project must undergo a **rigorous planning and decision making process** called an Environmental Assessment (EA).

This process is **regulated by the Ontario Ministry of the Environment, Conservation and Parks (MECP)** through the *Environmental Assessment Act* which is designed to protect, conserve, and wisely manage Ontario's environment.

A Two-Step Process

Step 1 Terms of Reference (TOR)

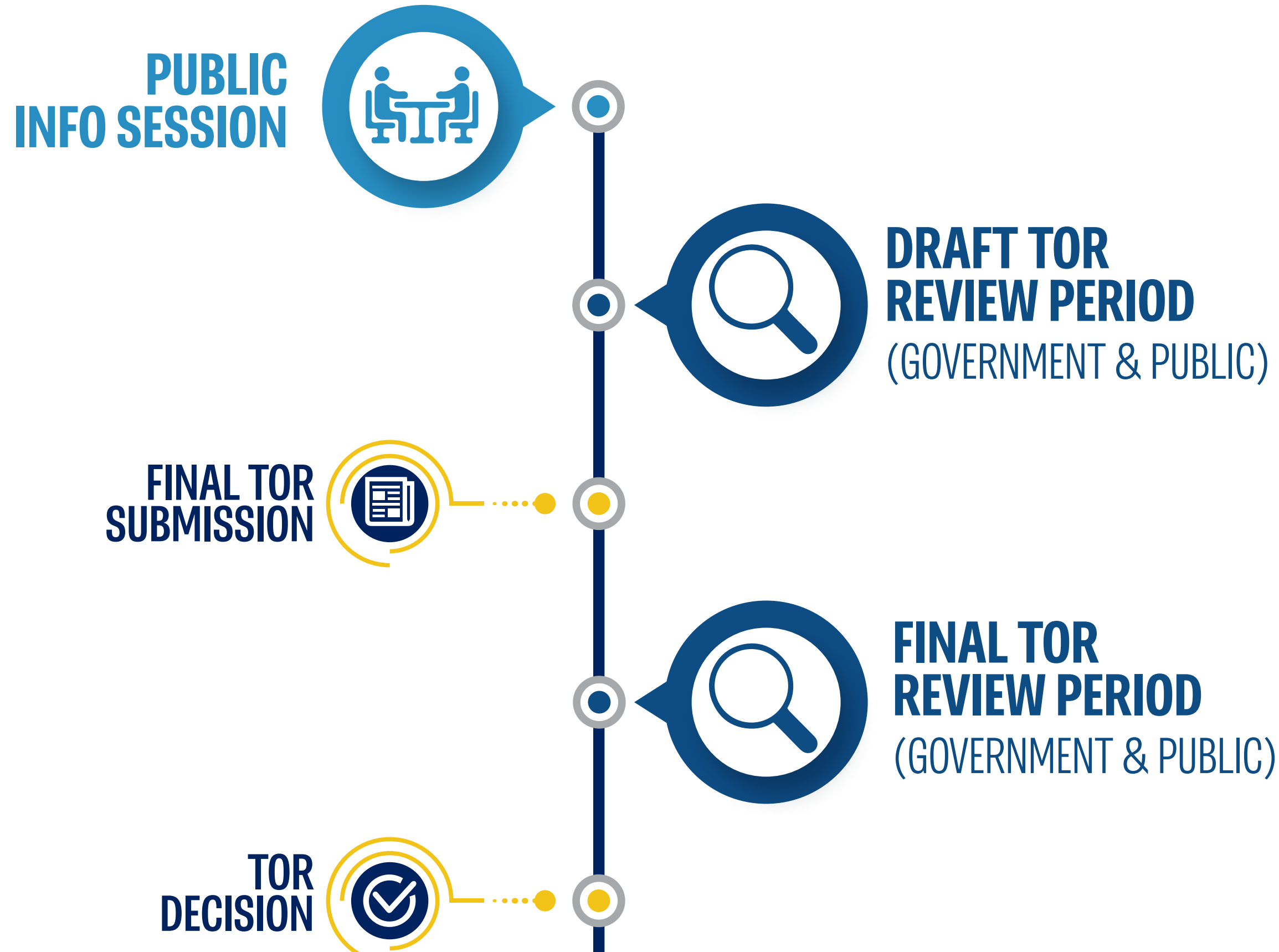
This is the initial step in the EA process. It is a document that serves as the roadmap for what will be studied in the EA and outlines the public consultation that will take place.

Step 2 Environmental Assessment (EA)

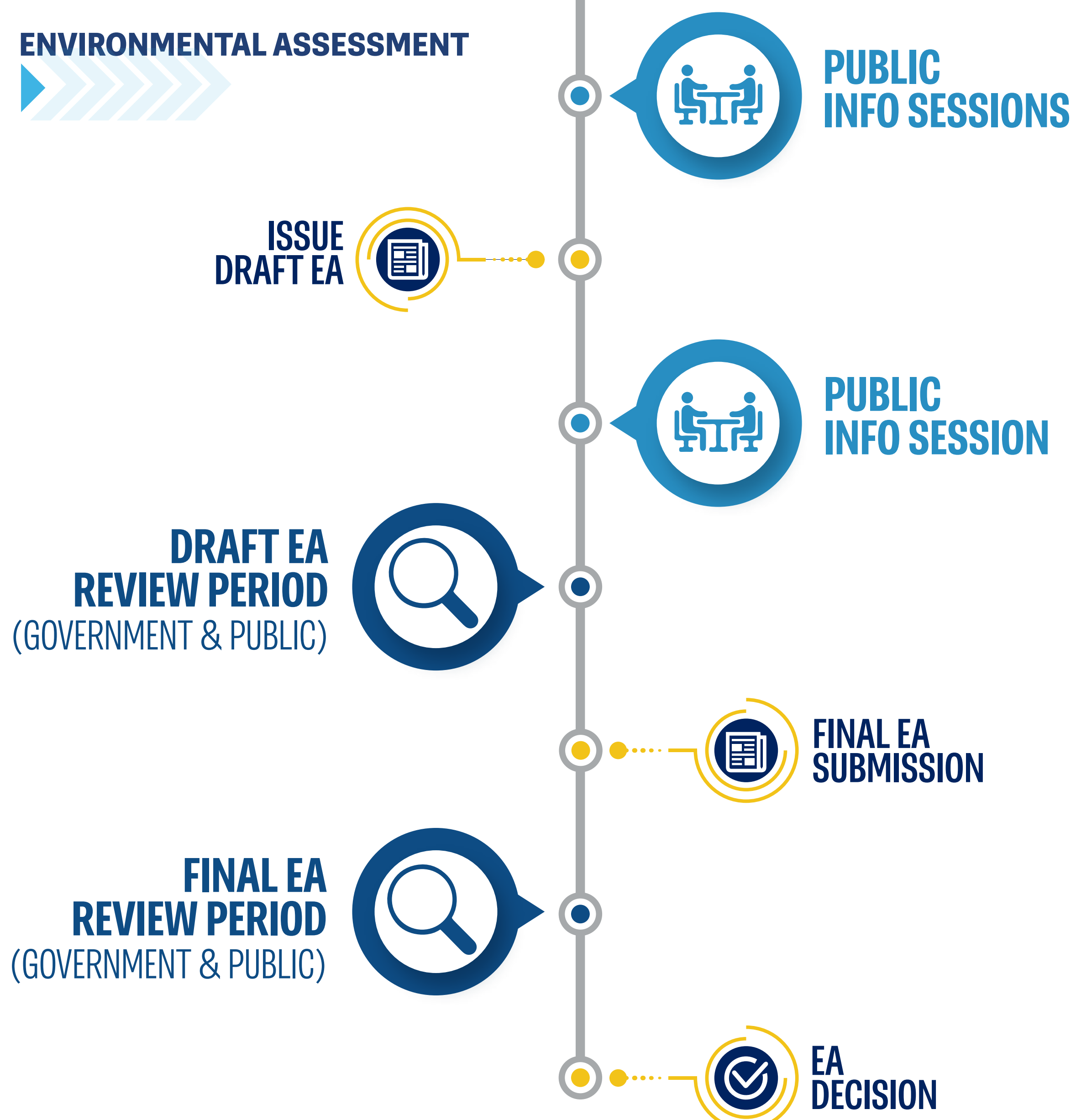
This is where the scientific studies occur. These studies identify the effects of the project, both positive and negative, and proposed mitigation measures where needed.

EA Process

TERMS OF REFERENCE



ENVIRONMENTAL ASSESSMENT



Learn more about the EA process:



Committed to **Safety,** Community and Future Generations

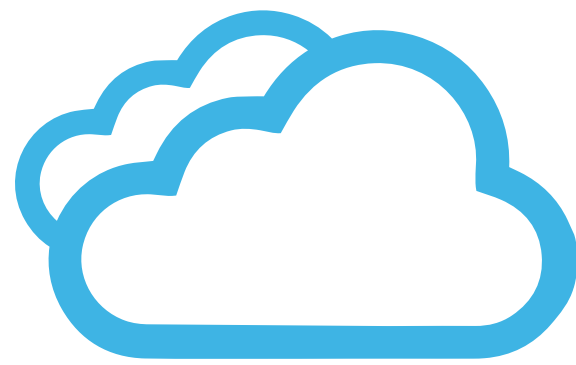
As part of the Environmental Assessment, numerous **scientific studies** will take place to ensure Phase 2 of the South Landfill will be **protective of the environment** while continuing to provide the community with **safe and reliable waste disposal services.**

Technical Studies

These are the studies that will be done as part of the Environmental Assessment.



Agriculture



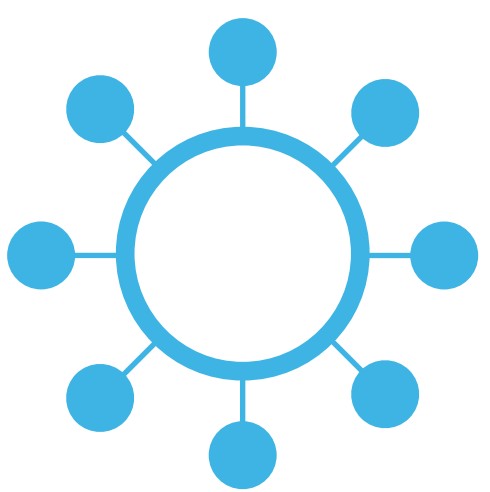
Air Quality



Archaeology



Cultural Heritage



Cumulative Effects



Ecology



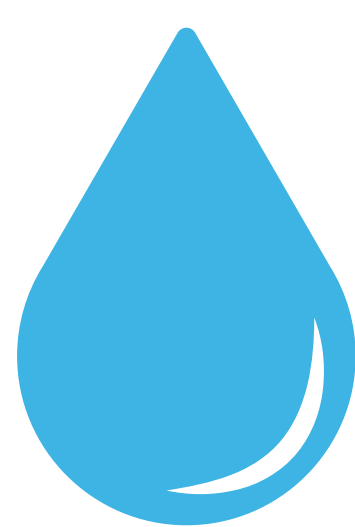
Economic



Noise & Vibration



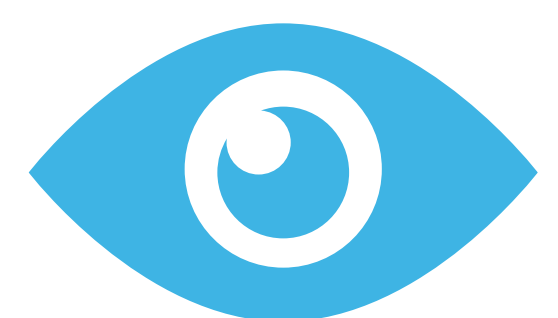
Social



Surface Water & Groundwater



Traffic



Visual

We Want to Hear from You

Your feedback is valuable and community input will be considered so that we can put forth a **Niagara-based solution**.

Connect With Us & Stay Involved



PROJECT WEBSITE

Visit to learn more & sign up to receive notifications
southlandfillphase2.com



PHONE

Call us at
1-866-699-9425



EMAIL

Send us an email at
info@southlandfillphase2.com



EVENTS

Attend public information sessions

Supporting Niagara

for over 136 years

Walker has a long history
of being an active community partner



Jobs & Employment

- Supporting approximately **500 jobs in Niagara** through our current waste management & resource recovery operations



Community Giving

- Donations and giving totalling over **\$1.4 million annually** to charities, community groups, and infrastructure in communities where Walker operates



Volunteering

- Providing employees **2 paid volunteer days** per year to support local community initiatives



Awareness & Education

- Supporting educational activities by participating in **community events, giving tours and presentations, and through partnerships**

Learn more about Walker's community partnerships:

