

# **South Landfill Phase 2** **Environmental Assessment**

Information Booklet

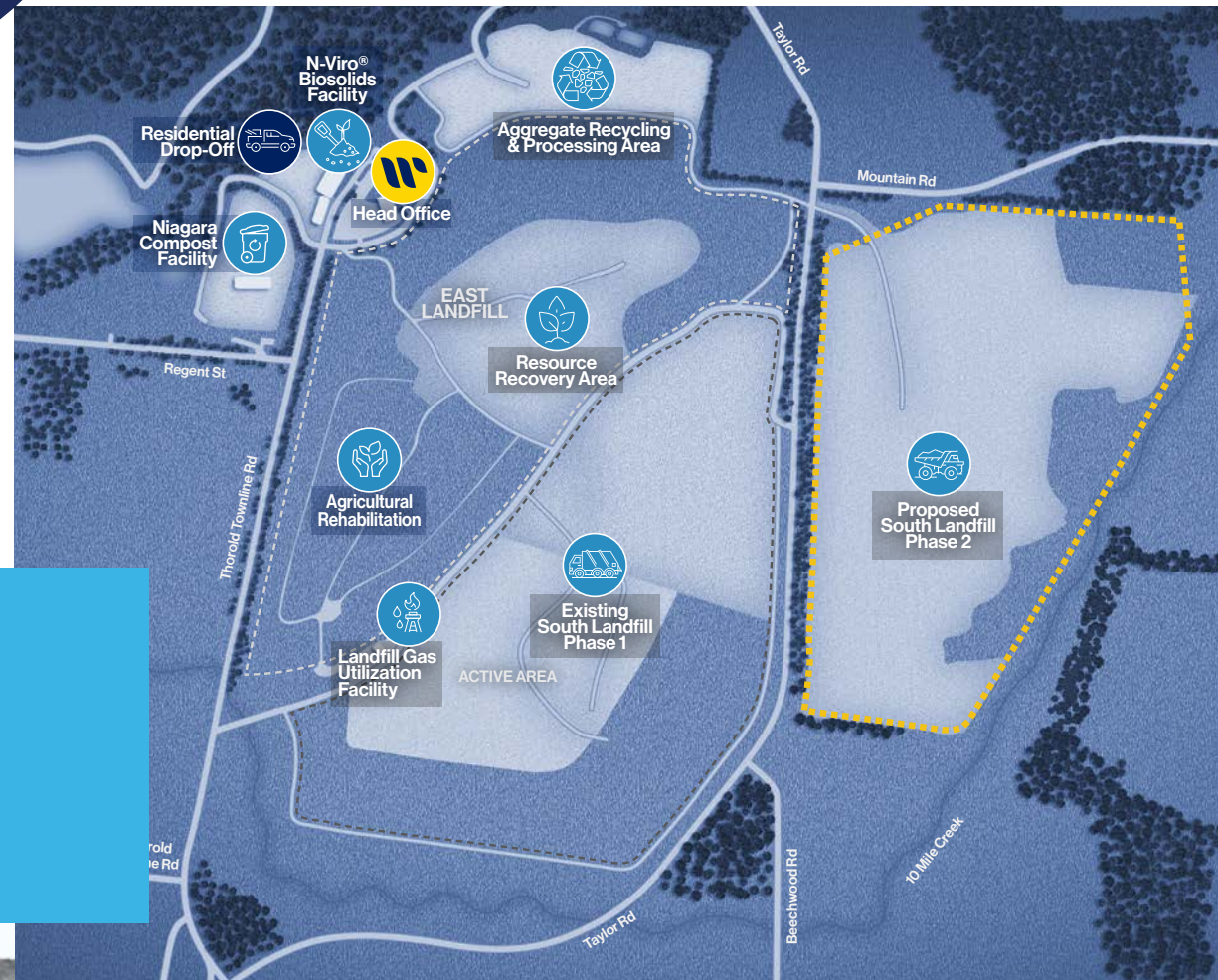


# Safe & Reliable Waste Management

As the Niagara region continues to grow, planning for long-term waste disposal capacity is increasingly important. Despite recycling and green bin composting efforts, landfill space is still needed for non-recyclable materials.

## More than a landfill

Walker's Resource Management Campus in Niagara is a dynamic operation that efficiently manages waste and sustainably recovers resources.



For over 40 years, Walker has played a key role in helping the community manage waste through safe disposal services. As the existing phase of the South Landfill in Niagara Falls reaches final capacity, we are proposing to develop the next phase of the landfill to continue to provide waste management for local residents and businesses.

Phase 2 of the South Landfill will provide additional disposal capacity over a 20-year period, supply renewable energy for the community by turning landfill gas into energy, and continue to be a major employer in the region.

# Phase 2: The Future Development of the South Landfill

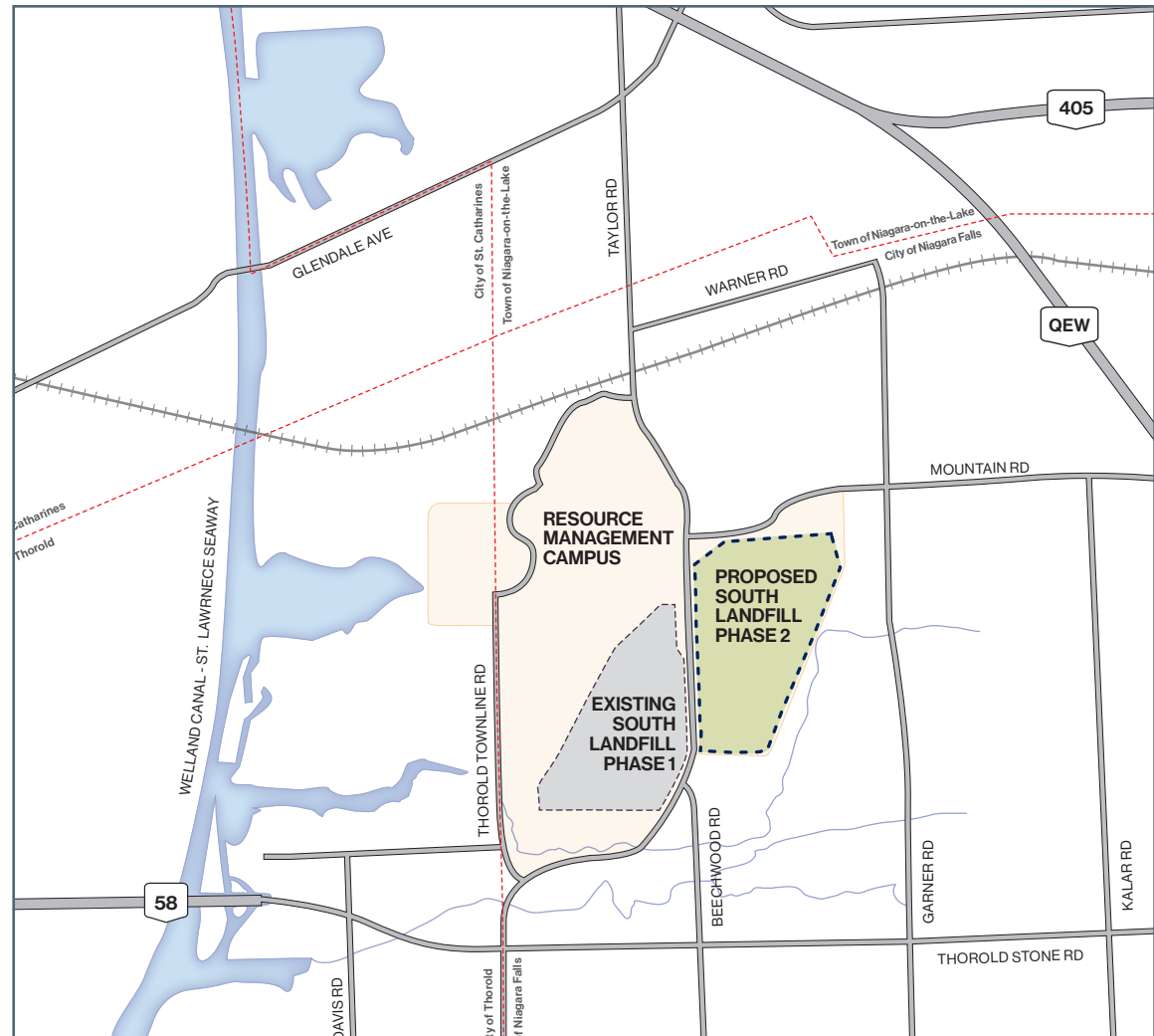
The South Landfill is a state-of-the-art, engineered landfill designed with exceptional safety and environmental controls that accepts only solid non-hazardous waste.

If approved, Phase 2 of the South Landfill would be developed on lands owned by Walker, located immediately east of current landfill operations. This site would allow for daily operations to seamlessly transition into a new adjacent fill area. Existing infrastructure such as the site entrance would not change.

## Did you know?



- Our landfill produces enough renewable energy to power the equivalent of 25,000 homes
- Walker delivers landfill gas to the nearby GM Plant, where it is used to generate renewable electricity & heat, reducing their carbon footprint by 70%.



## Phase 2 Key Facility Information



1.1 million tonnes of waste per year



~500 jobs supported in Niagara



18 million m<sup>3</sup> total capacity



Enough energy to power the equivalent of 10,000 homes

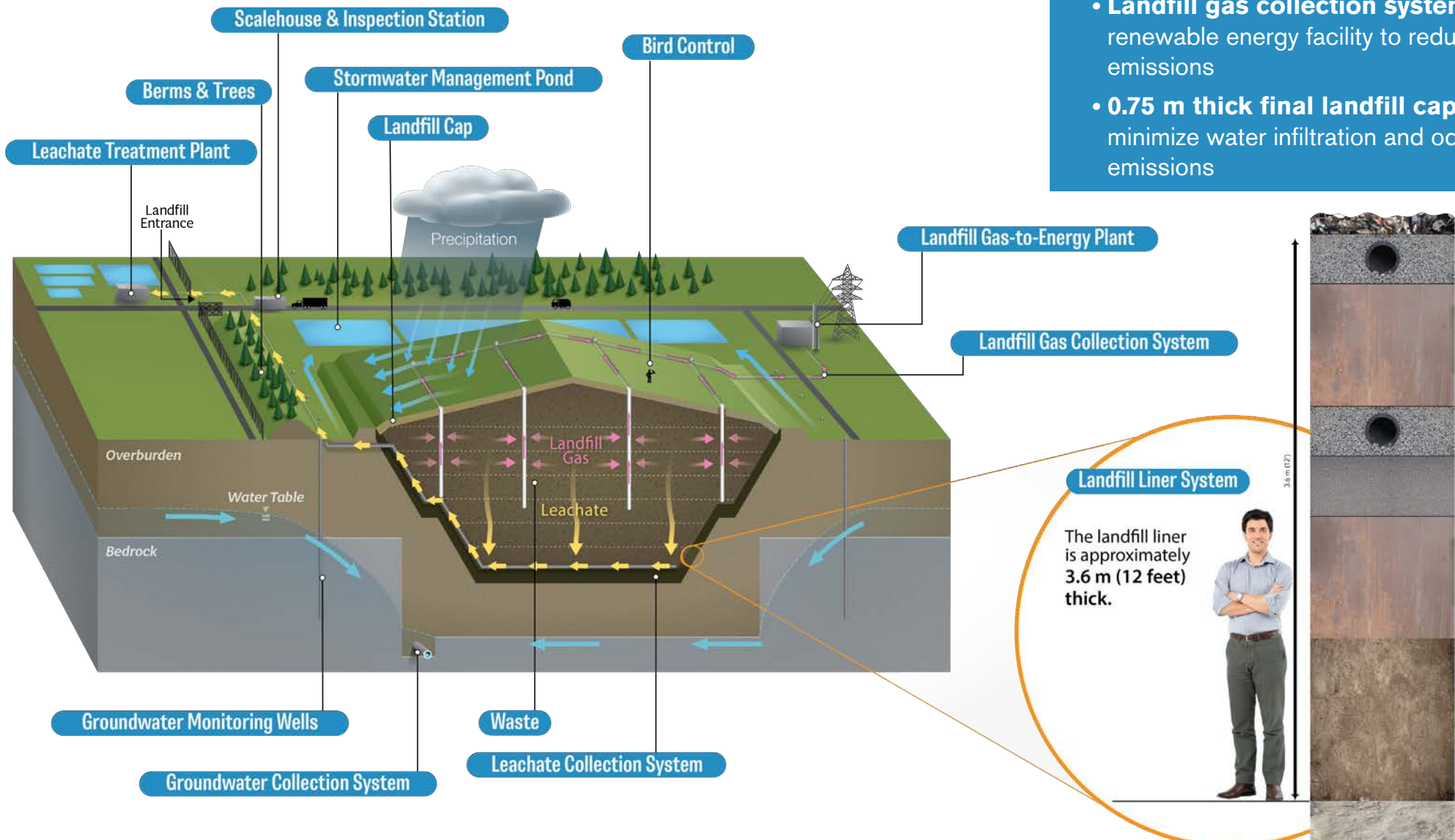


20 years of safe disposal

# Designed & Operated to the highest standard

## Key Features

- Sophisticated **12-foot multi-layer liner** that creates a **barrier** between waste and the environment
- **Leachate collection & treatment system** for removal & treatment of water that comes into contact with waste
- **Landfill gas collection system & renewable energy facility** to reduce GHG emissions
- **0.75 m thick final landfill cap** to minimize water infiltration and odour emissions



### Landfill Liner System

The landfill liner is approximately 3.6 m (12 feet) thick.



\* Liner system currently used at the South Landfill.

# A planning process that **Incorporates Your Input**

Before Phase 2 can be built, it will undergo a **rigorous planning and decision-making process** called an Environmental Assessment.

This process is **regulated by the Ontario Ministry of the Environment, Conservation, and Parks (MECP)** through the *Environmental Assessment Act*, which is designed to protect, conserve, and wisely manage Ontario's environment.

## A Two-Step Process

### Step 1 - Terms of Reference (TOR)

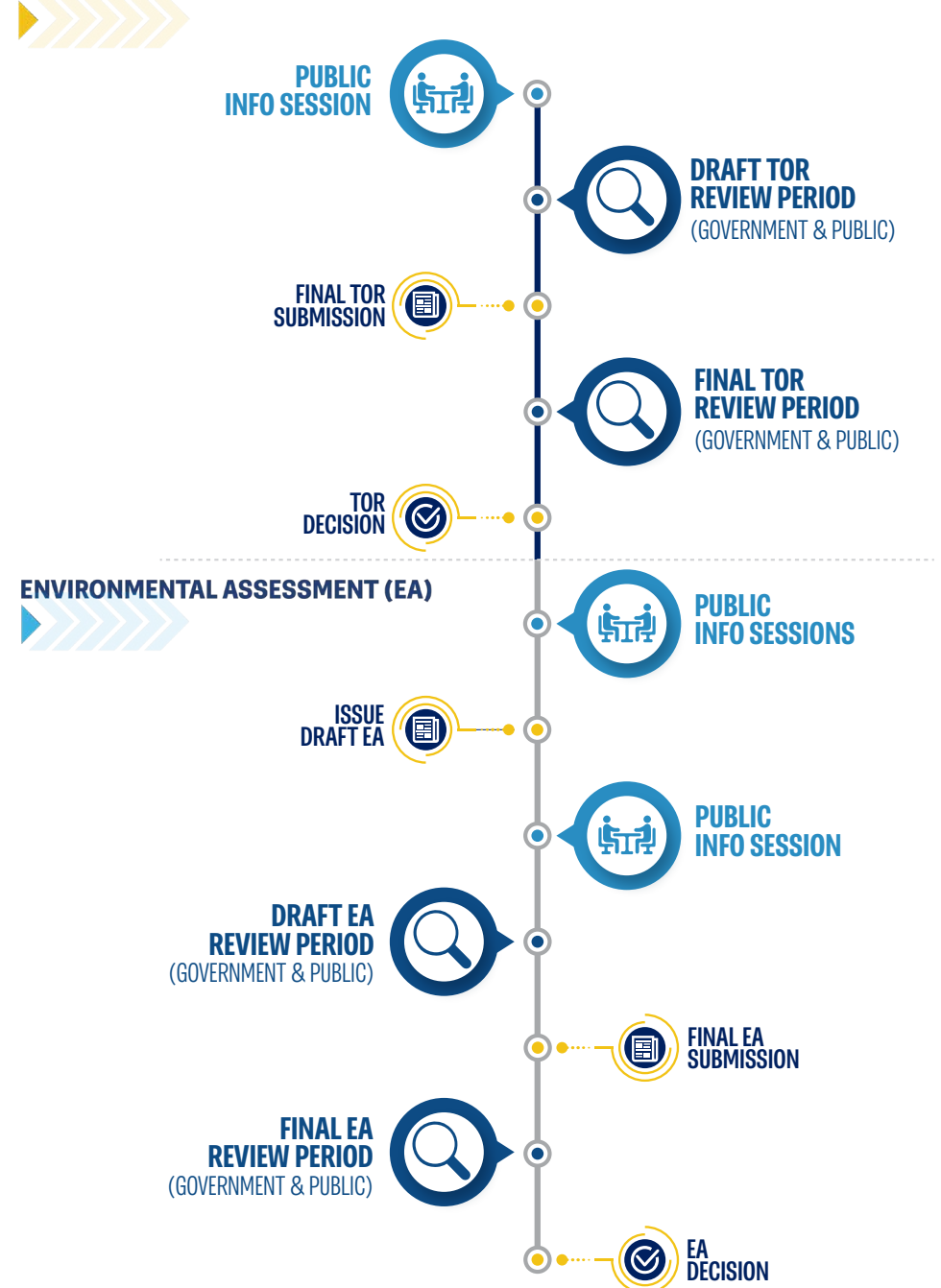
This is the initial step in the EA process. It is a document that serves as the roadmap for what will be studied in the EA and outlines the public consultation that will take place.

### Step 2 - Environmental Assessment (EA)

This is where the scientific studies occur. These studies identify the effects of the project, both positive and negative, and proposed mitigation measures where needed.

## The Environmental Assessment Process

### TERMS OF REFERENCE (TOR)



# Why Walker?

Walker partners with communities to provide responsible solutions, finds innovative ways to recover resources from waste, and keep our people safe through our commitment to health and safety.



## INDUSTRY EXPERTS

Four decades of landfill & resource recovery expertise



## RESPONSIBLE OPERATORS

Extensive environmental monitoring & controls



## FUTURE-ORIENTED

Committed to community & future generations



## INNOVATORS

Safe and reliable landfill design & engineering



# We Want to Hear from You!

Walker wants to hear your thoughts. Your feedback is valuable and helps inform our planning process so that we can develop a Niagara-based solution.

Anyone interested in the project can stay involved through our project website, public events and by contacting us directly. Learn more at [southlandfillphase2.com](http://southlandfillphase2.com).



**Darren Fry**

Project Director



**Elizabeth Duguay**

Planning & Community Engagement Lead



**Leticia Koole**

Project Support Specialist



**Kaitlynn Valeriano**

Communications & Community Outreach Manager

## Connect With Us & Stay Involved



### PROJECT WEBSITE

Visit to learn more & sign up to receive notifications  
[southlandfillphase2.com](http://southlandfillphase2.com)



### PHONE

Call us at  
**1-866-699-9425**



### EMAIL

Send us an email at  
[info@southlandfillphase2.com](mailto:info@southlandfillphase2.com)



### EVENTS

**Attend** public information sessions



 **walker**  
[southlandfillphase2.com](http://southlandfillphase2.com)